



The Ipswich Society NEWSLETTER

www.ipswichsociety.org

July 2023 Issue 234



Contents

Editorial	3	Grafton Way house-building	15
New members	3	Our AGM speaker Adrian Bleese	16
Chairman's remarks	4	Letter to the Editor	17
Planning matters	5	Ipswich Society Awards '23 nominations	18
Cauldwell Hall, Ipswich	6	Serendipity corner	19
Bob Malster (1932-2023)	8	Book review: <i>The Ipswich mint</i>	20
Heritage Open Days 2023	9	Book review: Ipswich cabinet trade	20
<i>Cobbold ales & tales</i> book	10	New way to support St Clement Church	21
Street scene	11	Packard's printing inks	22
Ipswich's future	13	Members' outing	24
A visionary entrepreneur	14	Rendlesham revealed	24
Michael Gove blocks housing proposal	14	Co-op <i>Harvest</i> mural listed	25
Suffolk's political balance changes	15	Our back cover	26



Coronation Carnival 22 July 1902

Children in fancy dress, probably in Christchurch Park, to celebrate the coronation of King Edward VII.

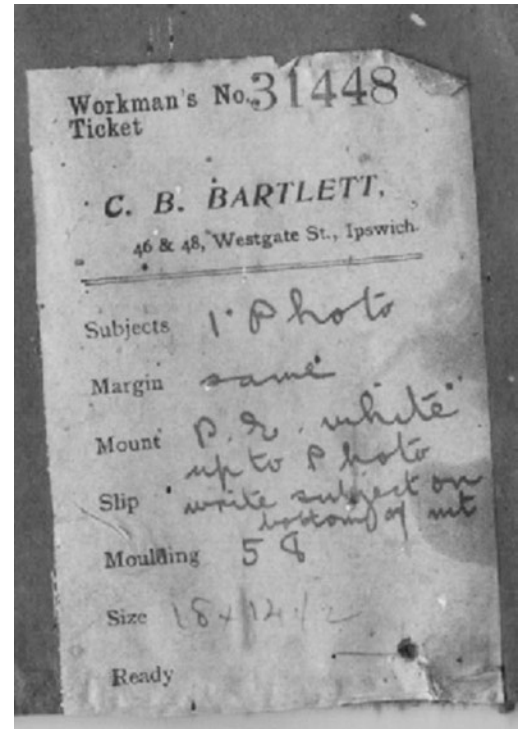
Editorial

First, a note to collectors of this *Newsletter* – such people do exist. The masthead on the cover of the last issue of the *Newsletter* (April 2023) had, tucked away at the lower left, ‘Issue 232’. This should have read ‘Issue 233’ and it has been corrected on the online version.

This-One-Will-Run-&-Run Dept.

Sometimes in the *Newsletter*, once a hare has been set running, the subject provokes a chain of responses or articles. Recent examples include the Carr Street Co-op store demolition (see *Newsletters passim* and page 25), Copperas (page 22) and the 1930 Wolsey Pageant (page 18). This is most gratifying for the Editor and he welcomes further contributions on this or other topics. There’s a lot going on in Ipswich and we cover much of it on our online Facebook page and in these pages.

Thanks to Society member Nick Wiggin for our cover image. This Edwardian photographic print, on very fragile mounting board, hung in Nick’s family home for many years. Prompted by the first royal coronation in Britain for seventy years, in April 2023, Nick thought it would be of interest to our readers. It includes Nick's father as a youngster in the centre, wearing a pointed cap and just above the child dressed as Bottom from *A midsummer night's dream*. On the back of the frame is ‘Workman’s Ticket No. 31448’ for the framer C.B. Bartlett. According to Nick’s 1933 *Kellys directory*, Mr Bartlett was no longer at the address. 46 Westgate Street was Ipswich Wireless Co. and 48 was W.E. Harris, Baby Carriage Dealers.



*New sign at the entrance to The Buttermarket Shopping Centre
Photograph by Tim Leggett; see Street Scene on page 11.*



New members

S Fisher
E Lightfoot
T Davies
S Whymark
H Thompson
B Squirrell
S Cassidy
S & J Curl
K Hazelwood
R Wiseman
A Moore
M Wise
C Hammond
T Gornall

Chairman's remarks

I was invited by a local primary school to talk to their six and seven year-olds about Famous Ipswich People. The Mayor (John Cook) had been in the week before and John Field was due the following week to illustrate Carl Giles. I needed to maintain a gender balance: three females as well as three males, so Nina Layard, Edith Maud Cook and Margaret Catchpole. The choice of males was from a much larger and diverse pool: Big John Cobbold, Robert Ransome, and Edward Ardizzone. My next problem was 'Will six-year-olds understand *archaeologist*, *entrepreneur*, and *agricultural implements*?'.

A surprising number of the youngsters had: a) been to the seaside, b) dug in the sand and also had c) found some old coins or other ancient (in their terms) artefacts. Nina Layard wasn't the challenge I had expected.

We were on our way. However, keeping the attention of those who were not engaging was difficult. It is so easy to ask the first hand to shoot up for the answer when what 'teacher' should be doing is asking those whose hands have not responded, whose mind was wandering and whose thoughts were on something entirely different. They were, however, fascinated by the exploits of the horse thief and her sentence: 'transportation' to Australia and her decision to stay there. But they were even more attentive to the unfortunate exploits of the turn-of-the-century parachutist who met her fate falling from a factory roof in Coventry.

The overall outcome was that individuals, like each of the children present, could become successful in their own field; they just need to work hard and stick at it.

Heritage Open Days (HOD). It may seem a little early to mention Heritage Open Days, but we have a team, led by Neil Thompson, working on what should be a very popular occasion.

Adopting the Wolsey 550 theme, we are busy persuading the building owners in St Peters Street to join the party. Wolsey '*walked this way*', between the river (Wolsey's Gate) and Curzon Plain (Wolsey's Statue); you can too, inspecting the Tudor buildings along the way. He didn't call in at the Thomas Wolsey, it's only been a pub for 50 years, but you can – the first floor front room is panelled and there are decorative plaster ceilings throughout.

Potentially 30 other buildings will be open to visitors including the Ancient House and Pykenham's Gate House where we will need volunteers. No experience or in-depth knowledge required, just an hour or so sitting at the door welcoming visitors from far and wide. If you are willing to help please email the Hon. Secretary (details on page 27).

In addition to the customary HOD weekend, from 11th to 15th September we are organising a week of 'walks and talks' all with a loose Tudor theme. John Warren will explain the changes and tolerances to religion in this country in the 16th and 17th centuries and there will be at least two walks incorporating Tudor buildings. Details on page 21.

Membership fee increase. You will not be surprised to learn that the cost of almost everything has gone up since the end of the pandemic, not least the cost of holding the Society's AGM, the Awards evening and distribution of the *Newsletter*. To maintain the benefits that you have come to expect from the Society it became necessary to ask members at April's Annual General Meeting to approve an increase in the cost of membership. This proposal was unanimously approved. You will find, enclosed with this *Newsletter*, a form for your bank requesting a change in the amount you pay as a membership fee. Please complete the form and send it to your bank, a simple task that will ensure that you receive the *Newsletter* in 2024.

New membership fees: £15 for individual membership; £20 for couple/family membership.
John Norman

Planning matters

Partly due to my fractured hip making it impossible to attend meetings physically – and partly due to their reduced frequency because of the recent local elections – this is a much shorter report than usual.

Land between Tye Road and Unity Street, Duke Street. The developer proposed a five storey, 160-bedroom student building, with minimal parking provision. There were a considerable number of objections from local residents, ward councillors and from the Conservation and Urban Design Panel.

Firstly, there was no proof for the need for more student accommodation, Athena House being half-empty and the support from the university being lukewarm. Secondly, the block was too tall and overbearing in an area where the current height is around two storeys. Thirdly, the provision for car parking was inadequate and accessibility was too low. The Councillors on the Planning and Development Committee rejected the Officers recommendation to approve and voted to refuse permission.

1 Kettlebaston Way Appeal. 21/00962 The developers of the proposed 70-bed care home appealed IBC's refusal of March 2022; the appeal was dismissed by the Inspector who stated positively that the 'proposal would not harm the character and appearance of the surrounding area, and there would be economic, social and environmental benefits from the scheme'.

However, the Inspector went on to report 'I have also found that the proposal would be likely to give rise to an increased demand for on-street parking which would have a harmful effect on the safe operation of the highway'. There is no news of what the Fonnereau Trust and the developers are proposing to do now. I put the full appeal reference and the verbatim quote from the report in full as I know many members are keen to know what is happening to the much-lamented Victoria Nursery site.

The Island site, Ipswich Docks. ABP, the owners, hired Legal & General (L&G) to develop a large part of the island for residential use, for which it is zoned in the Ipswich Local Plan. The Chair and I attended a Public Consultation at the Customs House at which we learnt that the proposal was for two blocks of two and three storey modular houses, totalling 177 dwellings, separated by the Harbour Master Office and the original Lock Gate Keepers cottage.

Whilst adequate car parking for the houses is to be provided, there was little for the yacht berth holders. Some landscaping would come on The New Cut side but reinstallation of 'The Umbrella' was not in their remit as the land is owned by DEFRA. A pedestrian and cycle bridge will be built as SCC has allocated £9m to it; thus, there will be a Way, if not a Right! However, in the month, L&G have announced the closure of their modular factory near Leeds after a loss of £170,000,000. Note that the Local Plan aimed at over four hundred dwellings. Meanwhile, The Ipswich Society and The Ipswich Maritime Trust are negotiating with Historic England to have the original cottages listed at Grade 2.

We are also keen to see a Master Plan for the whole of the Island Site, including the longer-term proposals for the marina, cycle and pedestrian paths that encircle the 'Island' and possibly some green public open space (as opposed to minute 'pocket parks' which seem to serve nobody).

ITFC Portman Road. Gamechanger 20, the owners, together with the CEO Mark Ashton and the Chair, Mike O'Leary, are continuing their proposals to upgrade the stadium in line with their ambitions for the club in its newly promoted status to the championship. The first major change to the stadium is a new access route from the railway station and entrance under the South Stand. This has been made possible by the demolition of the former Staples building in Russell Road, creating a view of the stadium as fans walk across Princes Street bridge. Demolition of modern buildings does not require planning permission, but the Local Authority do require a method statement to ensure public safety. Planning Permission was required for the changes to create turnstiles and internal access routes within the South Stand.

A separate application was for changes in the Magnus Group (West) Stand, the infilling of voids to create new open plan office floor space and repurposing of spaces across the existing first floor, to create new floor space on the second floor to provide new Hospitality suites. Secondly, they wish to create a memorial garden for those whose ashes are interred at the stadium and a peaceful area of remembrance. This would be in a raised area at the Portman Road entrance.

Arras Square. This the long-awaited application by the Borough Council to improve Arras Square. It has been prepared by a group of architects, civil engineers, lighting designers, arboriculturists and ecologists.

The proposals are comprehensive and include seven main points:-

- Decluttering of existing street furniture and elements which are defunct and installing new street furniture and benches, including a concrete stair and ramp with integrated seating and planting.
- Repaving the entire site, which includes St Stephen's Lane west of the Church but not the stretch providing vehicular access into the Sainsbury's service yard.
- Accessibility improvements include a ramp to the North of St. Stephen's Church to improve the thoroughfare between St Stephen's Church Lane and the Buttermarket Centre.
- The removal of ten trees to improve visibility and overshadowing and to decrease damage to paving, reduce anti-social behaviour and replace them with eleven more suitable trees in carefully considered locations.
- Removal of the external boundary wall to sarcophagi on the east of the site to make them more accessible to read. Repair work to the Sarcophagi to ensure their stability.
- Energy-efficient LED lights will replace existing wall-mounted luminaires and lamp columns with simple modern fittings. Low-level fittings and up lighters on the church's external walls will improve the evening and night-time atmosphere and support the use of the church as an evening live music venue.
- An initial proposal is to paint the brick walls east and south of the church yard, and along the narrow passageway. The mural on the rear wall of Wilkinson's, and along the wall separating the service yard from the graveyard will be subject to an artistic competition, that along St Stephen's Church Lane may well replicate stylised medieval church architecture.

Some of the proposals have aroused criticism. Is it necessary to remove so many mature trees? Will painted walls in St. Stephen's Church Lane not just become a graffiti paradise? Do rising bollards really work? (they mostly do but are expensive to repair). Is the paving pattern too fussy? (me). But these are details which will be discussed before the work is carried out, and it will be a huge improvement if they can get rid of the cars whilst maintaining delivery access to the former BHS Arras Square entrance. Improving the paving and lighting in St Stephens Church Lane is a must! Please Mr Ashley – reopen the empty BHS store and bring some life back into Arras Square.

Mike Cook

Heritage Open Days Volunteering

Heritage Open Days are on September 9th and 10th this year and it always seems to me that this weekend is especially important for Ipswich. Our many fine heritage buildings are from such different periods in history and are so spread throughout the town that they are not always easy for visitors to access. This rich history, still evident in our urban landscape today, needs interpretation such as that provided by HOD. Ipswich Society members can play their part by volunteering as stewards in one of the buildings open to the public – this year the Ancient House and Pykenham's Gatehouse need our services. They are both open from 10 till 4 on both the Saturday and Sunday and I divide the rota into two hour sessions with two stewards on each session, so I need 24 volunteers altogether! If you feel you can give two hours of your time at some stage during the weekend, please do contact me on secretary@ipswichsociety.org.uk

Caroline Markham

Cauldwell Hall, Ipswich



Cauldwell Hall was a farm, long before the surrounding roads of Ipswich were built. I lived there as a child with my grandparents, Lionel and Nellie Vulliamy. Lionel was a solicitor and also the coroner who conducted the Sutton Hoo inquest. He had made a beautiful garden with a big lake in the valley. This was fed by a spring which came out at the same temperature summer and winter. Spring Road was named after this. He had a tame flamingo there. He used to walk round the garden calling it.



There was a crag pit where we used to look for fossils, and plantations of bamboos and at one time he grew bat willows for sale to make cricket bats.



Above: the lake and garden in the snow; the railway viaduct over Spring Road is in the background.

There were a lot of mature trees, mostly beech and oak. Luckily, he was no longer alive to see them cut down and the lake destroyed to make way for a housing estate. It would have broken his heart.

The house remains, but turned into flats now.

Lydia Vulliamy

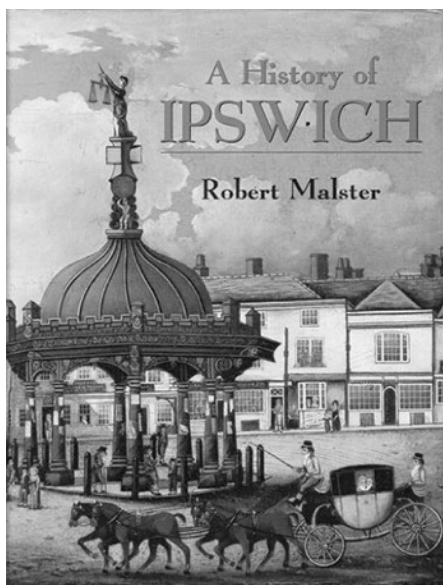
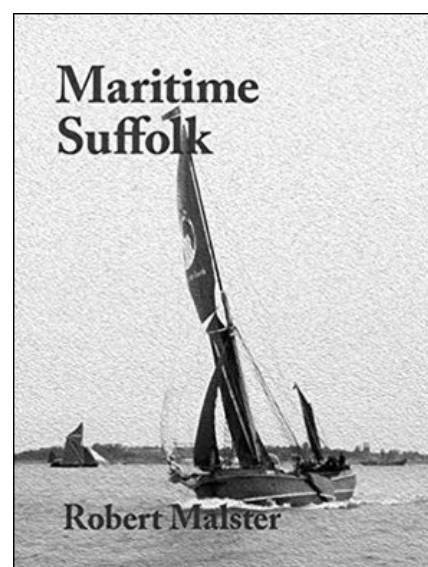
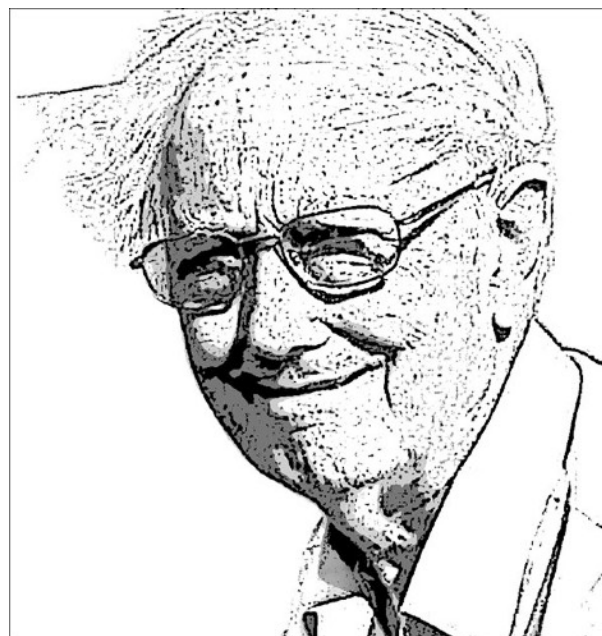
We are grateful to Lydia for these memories and photographs. Cauldwell Farm (and later Hall) played an important part in the Victorian development of eastern Ipswich, notably for housing. The Ipswich & Suffolk Freehold Land Society was hugely influential in Ipswich from 1850, particularly its role in building the ninety-eight and a half acres of the California Estate. The original farm has a long history and is said to have Anglo-Saxon origins, after 1066 being gifted to the Norman knight Roger Bigod. The name 'Caldwell', as a Manor, may date from the early 14th century in the ownership of the Holbroke family. Edmund de Caldeswelle appears to have been in residence in the Holbrook manor house in 1327. In the 16th century when Caldwell Hall was part of the extensive property of Christchurch Priory, the assets of the Priory were seized by that son of Ipswich, Cardinal Wolsey, to provide funds for his ill-fated College which he started to build in Ipswich in the late 1520s. Caldwell Hall was bought from Sir John Pope by the Withepole family, who built Christchurch Mansion in 1563. By the early part of the 17th century, the Caldwell Hall estate had passed to Robert Leman and then to William Rivers, eventually to John Footman in 1848. From 1919 to his death in 1956 Cauldwell Hall was the home of the Ipswich solicitor Lionel H. Vulliamy. Quite an extraordinary story. –Ed.

Bob Malster (1932-2023)

‘Ipswich has lost a stalwart historian, author and a mine of information; a sad loss. Bob gathered his information from a number of sources including his work (for the *EADT*), as a researcher and simply from his love of boats, the sea and associated ports.’
(John Norman, Chair of The Ipswich Society)

‘From adventurers and pirates, traders and tragedies, dreams and danger, Robert Malster, known affectionately as Bob, tackled a number of topics within his writing. Known for his diligence and all-round thoroughness, his talents will live on in his work. Born in Norwich in 1932, he became a Freeman of the city following on from his father.’
(*Eastern Daily Press* obituary, 23.4.2023)

‘Bob greeted me cordially in a household that betrayed some of the strains of collecting large amounts of historical material. He had become a publisher – Malthouse Press – as well as being a writer. At the moment he also edited the Babergh District Council newsletter... Bob had unfortunately arrived in Ipswich at the height of “redevelopment” in the early 70s, and he launched into a Seymouresque* denunciation of local politicians and planners. “If anything was ‘old’, they wanted to pull it down. I wrote my book on Ipswich partly to show people what they’d got”.’
(Don Mathew: *Cycling through Suffolk*, 2002)



Having served his National Service in the Royal Air Force, Bob began his career as a journalist on the *Lowestoft Journal*. This led to his fascination with the fishing industry of the town and of East Anglia, the lifeboat service and so much more. He became a feature writer for the *Eastern Daily Press* and then the *East Anglian Daily Times*.

His many books and articles are treasure troves of imagery and information, all presented and written with passion and flair. The Editor’s favourite is *The Wharncliffe companion to Ipswich: an A to Z of local history* (2005) which offers 262 pages of those nuggets about our town which frequently make the reader stop and think: ‘Well, I didn’t know that!’.

To those with an interest in local history, Bob was a familiar figure at the meetings and talks organised by clubs and societies. He was a regular at Ipswich Society events and had close involvement with The Ipswich & District Historical Transport Society and The Ipswich Maritime Trust, as well as giving occasional lectures.

Bob Malster died at Ipswich Hospital on Sunday, April 16. He was aged 90. He is survived by his daughter, Andrea.

RG

[* After Seymour Krelborn, the main character in *The little shop of horrors*.]

Ipswich Heritage Open Days, coming up in September

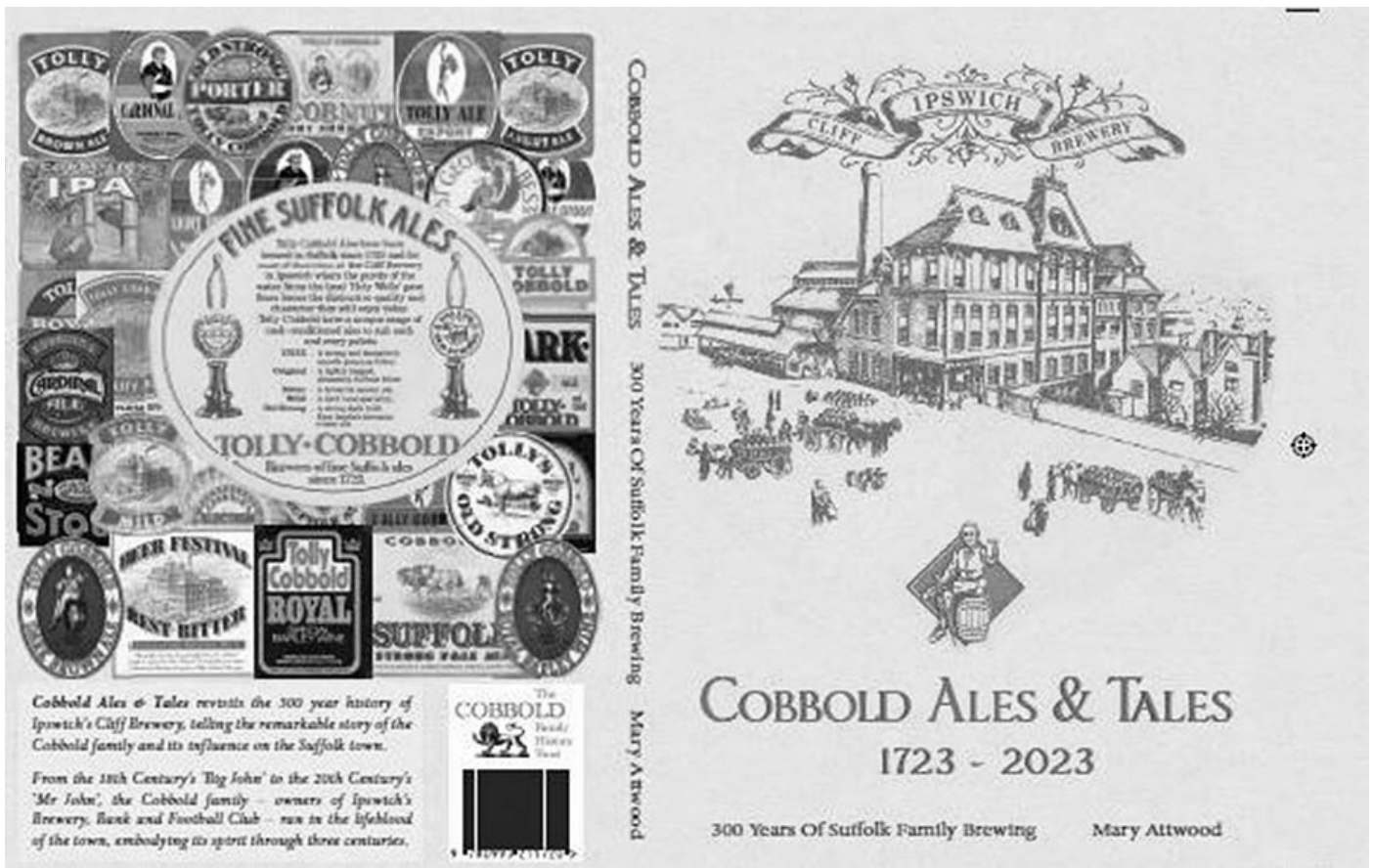
September is a time for reflection and collection of thoughts as the year goes round when we look back at the wows of the year, the joy of summer months and the fulfilled promise of earlier in the year.

In the Society, we begin the programme of lectures and look forward to the Wednesday sessions at the Methodist Chapel and even towards the major winter event of the Annual Ipswich Society Awards. However, before all that there are the Heritage Open Days to look out for. On the 9th and 10th of September the Society will set up its gazebo on the Cornhill and provide a focus point for the Heritage Open Days where it will be possible to pick up a guide book for the weekend's events and to be directed to the various locations around the town centre.

We are proud to coordinate the Heritage Open Days event in Ipswich on behalf of the town and all our wonderful participants. At the current time we can foresee that a greater number of locations will be available to visit and explore this year – possibly thirty-two – which should include the Ancient House which proved to be a major and fascinating attraction last year.

The guide books will be available during August to prepare for planning the weekend and it all promises to be as interesting and revealing as ever before.





Cobbold ales & tales: 1723-2023 by Mary Attwood

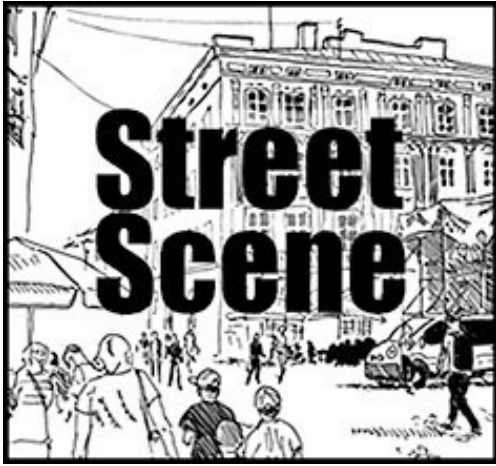
The latest book from The Cobbold Family History Trust is written by family member Mary Attwood. A Chevallier descendent, she is an art historian with a special interest in how past ideas and people have shaped our present world.

She opens in the time of Chaucer and takes us through the first green shoots of two Thomases struggling with the most basic ingredient – water – to the prodigious growth of third generation John, now known as ‘Big John’, with very good reason, and on to John Wilkinson who broadened the business with well-aimed ventures into merchanting, shipping and banking. John Chevallier Cobbold pursued growth but was also a player at national level employing a little enlightened self-interest to bring the country’s biggest wet dock and the railway to Ipswich.

Tragedy struck with the early death of John Patteson Cobbold demanding the return to Ipswich of the academic Felix whose able handling of the banking interests provided much beneficial philanthropy. John Dupuis, the last member of the Cobbold family to occupy Holywells, married the most extraordinary of all the Cobbold wives, Lady Evelyn Murray, who outlived her husband and all her children and then converted to Islam, but not until her only son, who married into the aristocracy, had become tragedy victim number two being killed by a doodle-bug whilst at church on a Sunday morning in 1944.

The last of the Cobbolds, Mr John and Mr Patrick, as they were affectionately known to ‘Town’ football fans, presided over not only the optimism of the merger with that other stalwart local brewery run by the revered Tollemache family but also, sadly, the decline of the business at the hands of commercial giants. Fortunately, perhaps, they did not live to see the struggles leading up to the abandonment of The Cliff to silence, desolation, vandalism and finally arson.

The illustrated paperback costs £10 and was launched at Holywells Park on 24 June 2023 at the Cobbold 300 event and is available from ‘Books for Sale’ on the website www.cobboldfht.com.



Reporting on changes in town centres today can be depressing at times. It is nine months since I wrote a *Street Scene* in this format. Shops and businesses are closing in town centres all over the UK, many of them big names we have been brought up with, but new shoots still appear and I have been requested to carry on with this page by popular demand so here are a few of the many positive things going on in Ipswich at the moment. Cafés and restaurants are big business in most towns these days and Ipswich is no different with an abundance of longstanding independent cafés and coffee shops in the town centre, along our Waterfront and in our wonderful parks.

Here are just some of the recent independent café additions to join Ipswich.

MOMENTS CAFÉ and Coffee Shop run by the St Elizabeth Hospice recently opened in Ipswich Town Hall with its outside seating overlooking the Cornhill fountains. This new café is always very popular.

Right next door in the old Post Office on Cornhill we now have THE BOTANIST restaurant and bar with seating and planters spilling out onto Cornhill. A smart venue in the recently restored Grade II listed Post Office building and always busy.

The ever popular Ipswich independent Patisserie and Café BONBON with its home-made produce has recently moved from its small shop into the former Patisserie Valerie unit in Butter Market giving it much more space and indoor seating.

H&R DESSERTS is another independent cakes and ice cream café which has just opened in Westgate Street.

New Ipswich independent HARRY'S Handmade Doughnuts and café with its kitchen on the top floor has opened on the ground floor in Sailmakers Shopping Centre with seating along the front. Next door, another independent café and sandwich shop, the VITAMIN BAR, has opened; its speciality being bubble drinks and it is popular with young and older alike.

The ARKANA COFFEE HOUSE with outside seating has opened in the recently restored former Green and Hatfield antique dealer's shop in St Margarets Plain.

The smart independent TAKAYAMA Japanese Restaurant has opened in St Nicholas Street, as has the popular independent ST NICHOLAS SANDWICH SHOP with its homemade bread, deli-style sandwiches, and artisan cakes.

The ENCORE COFFEE HOUSE and cakes café has opened to the public in the Hope Church in the restored former Odeon Cinema complex in St. Margarets Street while the RIVER CAFE has opened in the River Church in St Mary-at-the-Quay in Key Street.

The BISHOPS PARLOUR CAFÉ has opened in the completely refurbished old stable block in Holywells Park and runs an additional coffee and ice cream kiosk by the recently reopened children's playground with its splash fountains and new play equipment. (We understand the Heritage Lottery restored ORANGERY in Holywells Park is scheduled for a smarten up later this year.)

New shops continue to appear filling the empty gaps around town. Recently, LEADING LABELS, a new entry for Ipswich, has opened in Sailmakers Shopping Centre in the former TopShop unit and BLUEINC has opened a new and smarter shop in the former TopMan unit while their old shop is being refitted for BODYCARE, yet another new name for Ipswich.

VERNON FOX DISCOUNT STORE is reported to be opening soon in the large former JJB unit under the old Woolworth store in Carr Street.

McColls stores were taken over by Morrisons earlier this year and the Ipswich McColl's by Tower Ramparts Bus Station has now become a MORRISONS DAILY. Ipswich already has a large Morrisons on the edge of town. WOODGREEN ANIMAL SHELTERS Charity Shop is opening in the former Joules in Butter Market.



*Arkana Coffee House,
St Margarets Plain*

Some fairly substantial building projects are planned or are under way around the town. On 19 June the new 99 bedroom IPSWICH CENTRAL TRAVELODGE is due to open on Russell Road/Chancery Road backing onto the ITFC football stadium. The former Staples and Better Gym site next to the hotel has been bought by the new ITFC owners and the retail warehouses have been demolished ready to create a new, much more visible and smarter entrance to the Sir Alf Ramsey Stand with its approach from the nearby railway station, while a new pitch is being laid in the football stadium reported as having undersoil heating, high-draining sand will be installed below a modern hybrid surface (a combination of natural and artificial grass) and served by a new sprinkler and irrigation system.

ARRAS SQUARE in St. Stephens Lane has been getting tired in recent years and is scheduled for a major makeover starting later this year to complete in 2024. Erect Architects have been working with Ipswich Borough Council to develop the design which includes new seating, paving, drainage, lighting, CCTV, litter bins and trees as well as a new mural following a poll carried out by the Ipswich Star, which selected Arras Square as the public's top priority for improvements.

The restoration and conversion of Grade II listed ST STEPHENS CHURCH into a MUSIC VENUE is nearing completion. The church, owned by Ipswich Borough Council, is being converted into a live music and community entertainment venue for up to 225 people. During the daytime there will be a café and meeting place for like-minded creatives, students, and the wider community with the ability to host events and exhibitions plus a range of live music performed in the evenings.

Meanwhile Phase 2 of the ST. CLEMENTS CHURCH ARTS CENTRE is well under way with the addition of toilets and other ancillaries.

Galliard Homes have started constructing many NEW HOMES ON GRAFTON WAY situated along the north bank of the River Orwell and opposite Ipswich railway station. The residential community is expected to comprise a mix of two-bed, three-bed, and four-bed homes which together will provide almost 160,000 square feet of housing once complete and will include

making up a wider and much improved public river path between Stoke Bridge and Princes Street Bridge.

The THOMAS WOLSEY HOUSE retirement apartments and adjoining housing complex by McCarthy Stone on the former Archant newspapers site between Lower Orwell Street and Turret Lane is nearly complete. Some landscaping is being added which will hopefully soften this rather brutal looking building over time.

House building continues in abundance on the WOLSEY GRANGE development off London Road and Hadleigh Road by the Holiday Inn, as well as at the BOURNE VIEW development on Bourne Hill and work continues on the GARDEN SUBURB (Northern Fringe) development. The total size of the new development that stretches from Henley Road west to Tuddenham Road in the east will be between 3,000 and 3,500 homes – that is adding about 10,000 residents to Ipswich.

The BUTTERMARKET Centre makeover is finally complete with new smarter signage over the front and rear entrances to the retail and leisure complex. The front of the former BHS has been tidied up with neat boarding over the doors and windows while it awaits its future.

PLANTERS and SEATING have been installed near the Thomas Wolsey statue in St. Peters Street as part of the ‘Greener Ipswich Project’, while more planters have been placed along ST. PETERS WHARF where the hoardings have been tidied up with some very eye catching, mostly commissioned, street murals. The project was organised by Art Eat Events, a community art organisation from Ipswich, and was a part of the Hullabaloo 22 programme, a series of activities funded by Suffolk County Council's Covid Continuity Fund for Culture.

Tim Leggett

Ipswich's future

I am becoming increasingly bemused by the number of committees, boards, or groups (of leaders) whose remit is to advise and steer Ipswich into the future. Which way to go, where to make investments that will create growth, where to spend the money that the Government is promising for town centre improvements. Not only financial support for the ‘town centre’ but also, for example, local shopping parades, skills training, and leisure facilities.

There is no definitive list of either the groups of advisers or the funding available, but I have heard of (but do not necessarily understand) the following:

Ipswich Vision, Ipswich Policy Development Panel, Ipswich Town Deal Board, Ipswich's City Bid. Cross Party Working Group, All About Ipswich (their online prospectus), Greater Ipswich City Deal.

I also know that these groups have various amounts of money to spend, and it is interesting to note that some of the projects are underway. The £3 million allocated to a single town centre ‘improvement’ was earmarked for Arras Square (following public consultation) some four years ago and only now coming to fruition.

It is possible that what we need is a Victorian Vision, and entrepreneur with foresight, a group that can see that things are not working and can spot the opportunity for change. Such a committee met in 1803 and by 1805 had obtained a Parliamentary Act to become the River Commissioners, purchase a steam dredger and straighten the navigational course. Wonderful names given to the short stretches of open water at right angles to the banks such as ‘*Back Again Reach*’ were lost as the river became easier for laden sailing vessels.

The vision of the River Commissioners worked, by 1830 loans had been repaid and £25,000 accumulated, discussion turned to creating a floating harbour, a wet dock where vessels could

berth alongside and remain afloat, level with the quay. William Lane, Collector of Customs suggested, at a meeting of interested parties in the Moot Hall, that a freshwater bypass channel should be dug, from Stoke Bridge to Cliff Quay (The New Cut) enabling the wide basin on the St Clement's side to be enclosed. When the new lock into the Wet Dock opened in 1842 the Mayor called for 'three times three' cheers for William Lane Esq.

A visionary entrepreneur

A similar group, this time including the brewer John Wilkinson Cobbold, and notably his son, John Chevallier Cobbold JP, MP, DL, dock commissioner, brewer, banker, and ship owner worked tirelessly to ensure that the railway came to Ipswich and extended beyond Ipswich to Bury and Norwich. Their motives were of self-interest, a railway would allow them to move goods, including the beer produced in Cliff Quay brewery and the cargoes imported into the Wet Dock but they also knew that the railway would benefit the town, allowing its citizens to travel and engage in business over a much wider area. The railway to London opened in June 1846 and to Bury in November the same year.

It seems we spend a lot of time, effort (and money) on thinking up ideas that then fall by the wayside. Take for example the Town Centre Master Plan of 2012 which proposed 40,000 square feet of additional retail space between the Cornhill and the Waterfront, an attempt to 'turn the town around', to create more of a north/south orientation rather than the current so called golden mile. It also touched on other schemes that you have seen and heard previously, a single bus station, a residential led redevelopment of Tacket Street carpark (behind Woolworth's) and improvements to the market.

I accept that 2012 was more than a decade ago and that Covid has intervened but in 2012 the demise of town centre retail was already evident, in Ipswich.

Michael Gove blocks proposals for an 'ugly' housing scheme.

OK, this is not in Ipswich, but it does mark an important step by the Government to implement the requirements of the NPPF (New Planning Policy Framework) which requires the design of new homes to be 'aesthetically pleasing'. The scheme refused was on a green-field site in Kent, proposed by Berkeley Homes. Michael Gove's grounds for refusal were that the proposed development was of 'a generic suburban nature' and did not reflect the aspirations of the local design code (Crane Valley in the Weald of Kent – an area of Outstanding Natural Beauty). I understand that this is the first time a minister has turned down a development on aesthetic grounds since Gove promised to crack-down on 'ugly identikit housing.'

The decision was not welcomed by the Home Builders Federation (HBF) who said that the decision would drastically reduce housing supply, disrupting the Government's attempts to build 300,000 homes each year. In his decision letter Gove wrote that he did not believe Berkeley's plans to be to a 'high standard which has evolved through thoughtful regard to its context.' 'Overall, he does not find the scheme sensitively designed having regard for its setting. He finds that the design does not reflect the expectations of the High Weald housing design guide.'

Michael Gove had forewarned housing developers last year that he would veto developments that were not aesthetically pleasing arguing that better design was the key to persuading local communities to accept new developments. He said 'too many new homes have been ugly, shoddily constructed, and poor quality, identikit creations plonked down without regard to the shape and character of existing communities'.

A change in the political balance of Suffolk

OK, so I do not normally write about politics in this journal and The Ipswich Society strives to be non-political, but it is probably worth recording that in the May 2023 local elections the Green Party had sufficient success in both East and Mid-Suffolk that they now have effective control of the councils. Given that rural Suffolk has been staunchly tory since local government reorganisation in 1974 (and in some cases for decades before then) this marks a major change.

In Mid Suffolk the Greens, having won the majority of seats, have overall control of the Council. In East Suffolk – formerly the two districts of Suffolk Coastal and Waveney – the Greens are sharing control with the Liberal Democrats, the Greens have 16 seats, the Lib Dems 11 against the Conservatives' 15 and Labour's 12.

What makes this Mid Suffolk win so momentous is that it marks the first time that the Greens have won outright control of any local authority anywhere in the United Kingdom and according to party leader Carla Denyer anywhere in the Northern Hemisphere.

The Greens were so confident of success in Mid Suffolk that, before the elections, they launched their national manifesto in Stowmarket. They were predicting that they would gain five seats. Following the count they had increased their seat numbers by twelve to 24 (against a total opposition of 10). However, it is worth pointing out that voters in Mid Suffolk are probably not Water Melon Greens (Green on the outside, but red inside), they have been described in the national press as Mangos, Green on the outside, orange within, suggesting an alliance with the Lib Dems, as is the case in East Suffolk.

The Mid Suffolk Greens, according to their manifesto support an ecologically sustainable society, environmentalism, social justice, and grassroots democracy. We await with interest the changes the new administration will bring.

Grafton Way house-building

You will possibly have read previously how the market for Waterfront apartments is not as lucrative as had been expected. At the turn of the millennium when building tower blocks on the Northern Quays started Ipswich was predicted to be the 'go to' residential destination for London commuters.

However, twenty years after the demolition teams started there are still quite a number of flats 'for sale,' many of which have been on the market for some time. The tallest block, The Mill at 23 storeys and the attached seventeen storey block are still not finished and have never been occupied.

The former B&Q site in Grafton Way – at one time earmarked for Tesco – received planning permission for town houses rather than the multi-storey apartments we expected. What is interesting here is that as the contractor, Galliard Homes, starts building expecting to sell the units individually 'off plan'. The entire site has been sold to a private landlord. Every single one of the 163 two-, three- and four-bedroom homes have been purchased for the rental market by Aviva Investors and build-to-rent specialists Packaged Living.

This type of private landlord, which offers newly-built homes for rent, is relatively new to Ipswich but is becoming increasingly common in London and other cities. Young professionals cannot afford to buy, but choose to spend a considerable proportion of their salary on renting an 'up-market' property.

JN

Our AGM speaker, Adrian Bleese

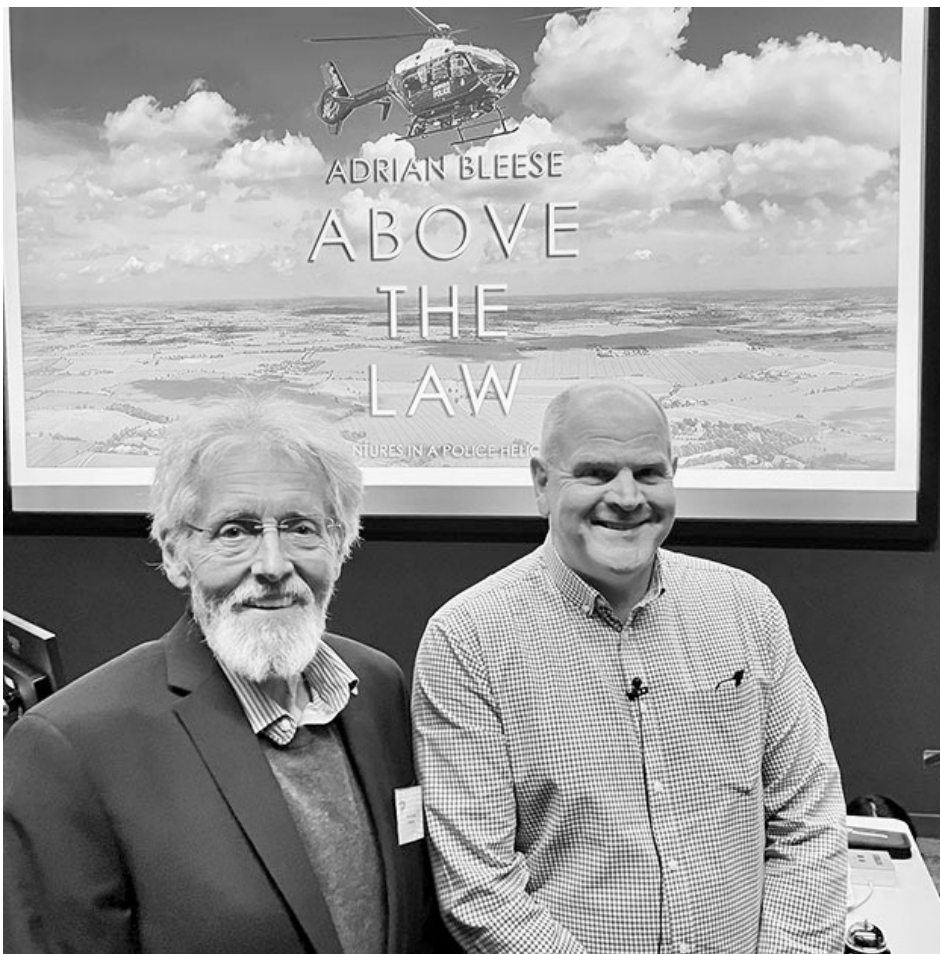
The April 19 AGM business completed, we were presented with the adventures of a police helicopter observer. Adrian Bleese, with the showmanship of a stand-up performer spent just over an hour captivating us with the ups and downs, the swoops and hovers, the chases and the rescues of his time as one of a handful of the civilian air observers – anywhere in the world.

His twelve years with the Suffolk Constabulary and later the National Police Air Service (NPAS) were outlined in amusing and fascinating detail. His claim to have had the best job in the world was held up by the unreserved delight in which he addressed the riveted audience. We heard accounts which surprised, reassured and worried us in equal measure; from the story of the car chase to Walberswick with all cars in pursuit, when the felon eluded capture by swimming across the River Blythe to Southwold; to the many successful searches for ‘mispers’ or missing persons and ultimately to the sad aerial coverage decline in Suffolk by reforms made by NPAS.

Adrian had a memoir to sell and he made a very impressive job of doing so. His presentation indicated what is revealed more fully in the book as being a thoroughly enjoyable read. Although this was only hinted at in his talk, the chapter in which he examines the nature of observation and his interpretation of the manner in which he feels the brain adapts and adjusts during the process of developing a rewiring of one’s seeing is remarkable. He quotes Ralph Waldo Emerson reflecting on the effects of detailed observation: ‘The mind, once stretched by a new idea, never returns to its original dimensions’.

I think our speaker managed to stretch our audience at the AGM and they departed to wine and nibbles bearing new insights and admiration for both the Constabulary and for Adrian Bleese.

Tony Marsden



Society Chairman John Norman with Adrian Bleese, author of the book Above the Law

Letter to the Editor

Wolsey and music from Richard Wilson

I greatly enjoyed your excellent piece on Wolsey and the 1520 Field of the Cloth of Gold. As we are in the midst of celebrating Wolsey 550, perhaps I might add some more colour by outlining just how important music was to that glittering occasion?

Wolsey was indeed the chief architect of the drama and spectacle at The Field of the Cloth of Gold, sparing no expense in building magnificent temporary chapels and lavish banqueting halls. But music also played a key role in what David Starkey has called 'this exercise in the politics of splendour', accompanying the many entertainments, feast, jousts, public encounters and religious services. No doubt the promise of unlimited free wine for the duration of the trip sweetened the deal for certain members of Wolsey's household choir who were shipped across the Channel alongside the singers of the Chapel Royal and an array of minstrels.

The centrepiece of this elaborate summit meeting was the service begun at noon on the penultimate day, which has been called one of the period's most spectacular displays of liturgical theatre. Overnight, a grand chapel had been erected on the jousting ground, the galleries converted into pews. It glittered with gold: ten large silver gilt images stood on the altar alongside two gold candlesticks and a large, jewelled crucifix, the whole structure symbolising the triumph of religion and peace over war. Wolsey sat in prime position beneath a canopy by the altar, and between him and the royal pews were the organists, the musicians with their trombones, sackbuts, fifes and cornets, and the massed British and French choirs. The latter was almost certainly the choir from the Sainte-Chapelle, which despite recruiting from all over the continent struggled to find suitably qualified musicians: in 1511 a Master of Singing had been dismissed for his inability to sing, failure to read at sight, drunkenness and sedition...

Wolsey, dressed in vestments brought over from Westminster and wearing sandals covered with jewels, began by singing the Mass of the Trinity. The music was elaborate – 'a heavenlie hearing'. The English and French sang alternately, and according to a contemporary report 'Now sweet songs spring from the mellifluous throats of the singers, now the organ makes heard its pleasing sounds; now the honey-sweet song of the singers joins with the sound of the organ, so that you might say angelic music intermingles.' The lengthy service concluded with Wolsey blessing the assembled company.

The sumptuous banquet that followed was punctuated by yet more music: 24 trumpeters announced the arrival of gentlemen dressed in gold brocade bearing golden platters laden with food. Strident clarion calls announced each course and softer music, both instrumental and vocal, accompanied the four-hour feast. The parties afterwards adjourned to another pavilion for more music and dancing.

The whole event was hailed as a triumph, though soon the two nations were at each other's throats again – but as a cultural exchange it was a great success. It inspired composers on both sides of the Channel, and brought several new dances to England, including a novel form called a *pavanne* that was soon to become one of the staples at Court.

When Wolsey and his retinue returned to France in 1527 his minstrels played so well at a feast he laid on for the French Queen Mother that Francis asked if he could borrow them for a dinner of his own the next night. But things went badly for one particular wind-player: according to Cavendish, Wolsey's biographer, he was either injured 'with extreme labor of blowing' or he was poisoned by a jealous French rival, and within a couple of days the poor chap



was dead. Nonetheless, later that same year Wolsey hosted the French Embassy, who arrived in London ‘supported by a host of gentlemen, archers, wrestlers, musicians and tennis-players.’ The banquet held in their honour was, according to Cavendish, accompanied ‘with syche a pleasaunt noyce of dyvers Instrumentes of musyke’ that the visitors ‘were rapte into an hevenly paradise’.

Not bad for a lad from Ipswich whose musical education probably began at his school in what is now the south aisle of St Mary-le-Tower church...

Thanks to this contribution from Richard we can now pile superlative upon superlative regarding the sumptuous festival on the edge of the Pale of Calais in 1520. Of course, peasants in England had little or no knowledge of what was going on across the Channel. One can hardly blame the poorer French citizens in the area for sneaking into the site and partaking of those wine fountains. Thomas Wolsey made his mark, but at the expense of those short of a crust of bread.

Ipswich Society Awards 2023, call for nominations



Getting out and about now that the weather is improving seems to be the thing to do these days. Strolling into town and looking around and upwards has always been a good occupation for me and I'm sure it's the same for many members. Which is why it's important to keep your eyes peeled and watch out for new projects which are emerging from the ground or reaching completion with topping out events and the like.

I lived in Germany for twenty-nine years and one of the things that was prominent, certainly during the building of houses but other structures too, was *'The Richtfest'*.

This is the occasion when people who are building a house, or having some major renovations done on their house, give thanks to the builders and all involved in the construction work with a mini-ceremony; it typically occurs when the final beam is added to the roof. The crown-shaped wreath is hung at the top of the roof and the builders, architect and owners have a beer and read a *Richtfest* poem.

I'm not saying it's a tradition that should be introduced into Great Britain, mainly because of the potential consequences of beer consumption during a working day... but I have fond memories of these indications of a building nearing completion. I don't for one minute think that anywhere in our town will feature a wreath of this kind, but one never knows.

It may be early days in the course of the year, but already there are projects around the town which are coming to our notice with the Ipswich Society Awards 2023 event in mind.

Keep an eye out for possible nominations. The project might have been completed in the last two years, having been missed last year, or it has just passed us by. Please let the Hon. Secretary know or contact me (all contact details are on page 27).

Tony Marsden, Vice-Chairman

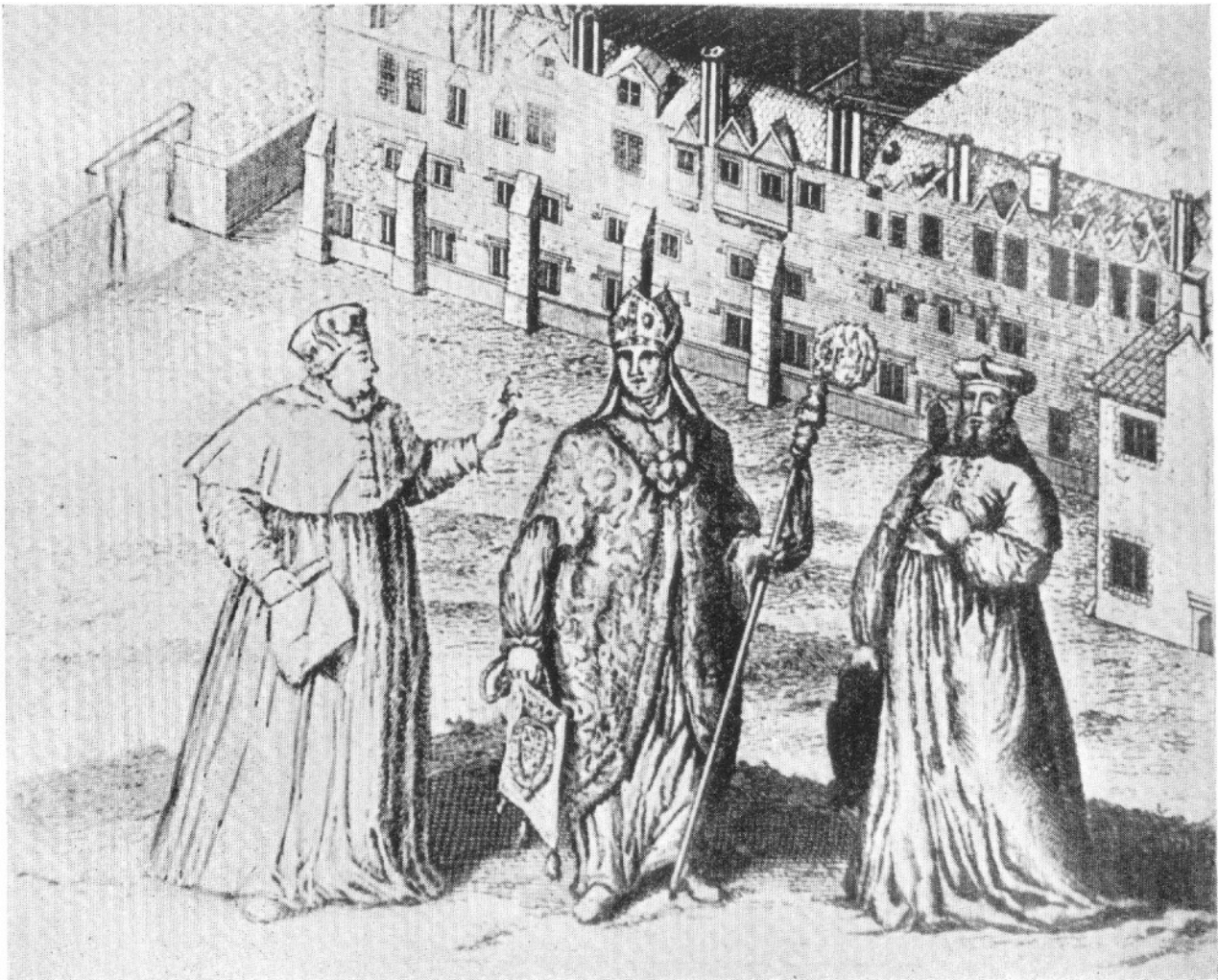
Serendipity corner

Regular readers may recall an excellent article by former County Archaeologist Keith Wade in the *Newsletter* of July 2019 dealing with the area between St Peter and St Mary-at-Quay, called by some 'St Peter's Port' – a potential candidate as a UNESCO World Heritage Site, if heritage organisations start to focus on the international historical importance of the Ipswich story. The article can be viewed via the Society's website and it includes possibly the only illustration of Wolsey's College. Keith did mention to the Editor at the time the poor quality of the copy-of-a-copy etc., but the latter was pleased to publish it. Indeed a copy of the article accompanied our Chairman's letter to the UNESCO headquarters in Paris which was sent in the ensuing weeks.

In 2023 those organising the Wolsey 550 celebrations have endeavoured to trace the original footprint of Wolsey's College, the remains of which have largely been obscured by industrial and road development in Ipswich, apart from the Water Gate in Key Street: the last survivor.

Not only that, but recent issues of our *Newsletter* have dealt with the first Wolsey Pageant.

Society member Carole Sims donated a copy of *Wolsey Pageant, June 23rd-28th 1930: souvenir programme*. The book runs to 114 pages and is priced on the cover 'one shilling'. This was the publication referred to in David Saunders' letter to the Editor in our April issue. It contains much



Wolsey's College at Ipswich
(from an old print, showing Wolsey, The Bishop of Lydda and another).

information about the performance including performer credits and a full script. The book probably deserves an article of its own. However, it also contains a reproduction of the Wolsey's College illustration – perhaps the best one available to us. The Cardinal is on the left.

Book reviews

The Ipswich Mint by John C. Sadler, £65 (available at discount price of £30 to Ipswich Society members; please contact the Society's Hon. Secretary).

I had an interesting conversation with Ipswich numismatist John Sadler earlier this year. John has written three volumes about coins minted in Ipswich, primarily Ipswich pennies. He has established that the Ipswich mint was in operation, not from 973AD as others have suggested, but probably from 200 years earlier. This was during the reign of the relatively unknown *Beonna*, King of East Anglia, about 758AD. He also confirms that the mint closed in 1207AD, at the end of the reign of King John.

During the reign of *Beonna* Ipswich was enjoying something of a boom, probably due to its accessibility from the sea – unlike Woodbridge at the head of the meandering River Deben, or Manningtree on the River Stour, which was too shallow – Ipswich was a deep-water port. Ipswich was able to trade, not only with other East Anglia coastal ports but also across the North Sea into the Low Countries. Not surprisingly, Ipswich pennies, minted for over 500 years have been found close to British coastal ports and as far away as southern Norway, Denmark and other Baltic countries.

You will be aware that excavations are taking place at Rendlesham, the probable site of Anglo-Saxon King Redwald's palace. John Sadler has been dating and valuing the coins from the excavations – with the exception of gold which is sent straight to the British Museum – for the archaeologists since the dig began. Incidentally, John tells me that, broadly speaking, gold coins are not found in Ipswich and this metal was not used at the Ipswich Mint.

Having initially trained as a signwriter, John's career was spent at Titchmarsh & Goodwin applying lacquer to new furniture. But his hobby was all-invasive and for the last twenty years of his working life he valued coins for Lockdales, the auctioneers in Martlesham and occasionally for other auction houses. John wrote the first of his three volumes: *Ipswich Mint; Eadgar to Aethelred II (973-1016)* in 2010 and followed this with his second, *Cnut the Great to Edward the Confessor (1016-1066)*. The third and final volume, *Edward the Confessor to King John (1066-1207)* is a much weightier book at 560 A4 pages which gives an indication of the 50 years of research which has gone into John's writing which is illustrated by numerous photographs and John's excellent drawings.

Each book is a comprehensive catalogue of Ipswich Pennies, also other coins and tokens struck in the town. Probably the most interesting chapters concern the history of Ipswich. Especially the 'wasting' of Ipswich by the Normans as well as the Danes in volume III. These books are for the specialist collector, Volumes I and II have sold out and there are only a few of the 250 printed copies of Volume III remaining.

JN

Stipple, snuff and no sharp edges: memories of the Ipswich cabinet trade, 1900-2000

by Heather Ling, (Ipswich Society members' price £35; please contact the Hon. Secretary).

If ever a book caused me to go 'Wow', getting the first site of Heather's book was it. It is a huge 275 pages of excellent research with photographs of some substantial pieces of furniture and notes on the people who lovingly created them. With chapters on Tibbenham's, Titchmarsh & Goodwin, Alston's and R.E.H. Kennedy, it is a comprehensive history of furniture-making in Ipswich through the eyes of the people who made it.

Throughout the twentieth century Ipswich held a reputation as the centre for reproduction cabinet-making; it started with Frederick Tibbenham who set up business at Tudor Court, Woodbridge Road in 1903. Together with his works manager, Ernest Gribble, they created the most prolific reproduction cabinetmaking firm in the world. Don't be confused by the term 'reproduction', Tibbenham's were making furniture together with the fixtures and fittings (panelled rooms, carved staircases) for some of the country's most prestigious historic houses, the major London stores (Liberty's in Regent Street) and hotels as well as the Cunard Liners (Queen Mary & Queen Elizabeth).

Heather has created a comprehensive record of furniture-making in Ipswich using the memories and written records of those who worked in the industry. To explain the title: *Stipple* is a finishing technique used, in moderation, to create an ageing effect. *Snuff* is a tobacco-derived substance used by the Cabinet Makers who were not allowed to smoke in the workshops. *No Sharp Edges* implies that the clean-cut crisp edges on a newly assembled piece were softened and rounded in the polishing shop, another ageing effect. I was impressed by Heather's book and recommend it to you.

JN

A new way to support the St Clement's restoration project

Members will be aware of the great strides made over the past couple of years to bring one of the historic treasures of Ipswich, St Clement's, back into use for its local community. Phase one of the project, during the winter of 2021/22 removed the old, uneven floor and replaced it with a gleaming new floor of marine timber, appropriate for the mariners' church, making it suitable for many uses.

This year we have moved on to phase two, including a new water supply and drainage, safety and electrical works, and installing toilets below the bell tower. It is an expensive project, and we have fortunately had some grants and donations to help. Of course, the more money the Ipswich Historic Churches Trust can collect for the project, the further we can work through our wish list.

The aim is to make this a community hub, for entertainment arts and events for a few more hundred years.

Individuals, groups and organisations can now donate directly to support the restoration of St Clement's through the Parish Giving Scheme website. Named individuals can also sign up so their gift can benefit from Gift Aid, or it can even be anonymous. It is also possible for donors to set up a regular monthly payment.

Have a look at the parishgiving.org.uk website. If you want to help, look for Ipswich Historic St Clements. The registration number is 33A63307. It couldn't be easier.

David Vincent

Introducing... Heritage Open Days 2023 *Walks and Talks*

organised by the Society. September 11-15, 2023. Dates for your diary:-

Tuesday September 12, 1pm: Phil Roberts talks on Cardinal Wolsey at the Museum Street Methodist Church;

Wednesday September 13, 10.30am: Ipswich Maritime Walk led by Tony Marsden (book via secretary@ipswichsociety.org.uk);

Wednesday September 13, 7.30pm: John Norman talks on Ipswich's Tudor Buildings at the Museum Street Methodist Church;

BRITISH INKS, Varnishes, and Dry Colours FOR BRITISH PRINTERS!

Specialties:

→* IPSWICH + SERIES. *←

LETTERPRESS INKS.

NEWS BLACK - - - - - 4s. 6d. and 6s. per doz.

MAGAZINE INK - - - - - 8s. 6d. and 10s. 6d. „
(STRONGLY RECOMMENDED.)

BOOK WORK - - - - - 14s. 6d., 18s., and 24s. „

BRILLIANT COLOURED POSTER INKS, 12s., 18s., and 24s. per doz.

LITHOGRAPHIC INKS.

MACHINE BLACK - - - - - 18s. per doz. nett.
(STRONGLY RECOMMENDED.)

No. 2, 24s. per doz. No. 3, 30s. per doz.

Printers desirous of supporting British Industries and encouraging Home Trade would do well to send for Samples, Specimens, and Price Lists. They will be found to compare favourably with Continental and American productions.

EDWARD PACKARD & CO.,
155, FENCHURCH STREET, LONDON, E.C.

Steam Works:—Ipswich, England.

Thursday September 14, 10.30am: John Warren talks on the Ipswich Dissenters at the Ipswich Unitarian Meeting House;

Friday September 15, 10.30am: Blue Plaques walk led by Tony Robson (book via secretary@ipswichsociety.org.uk).

Packard's Ipswich Series printing inks

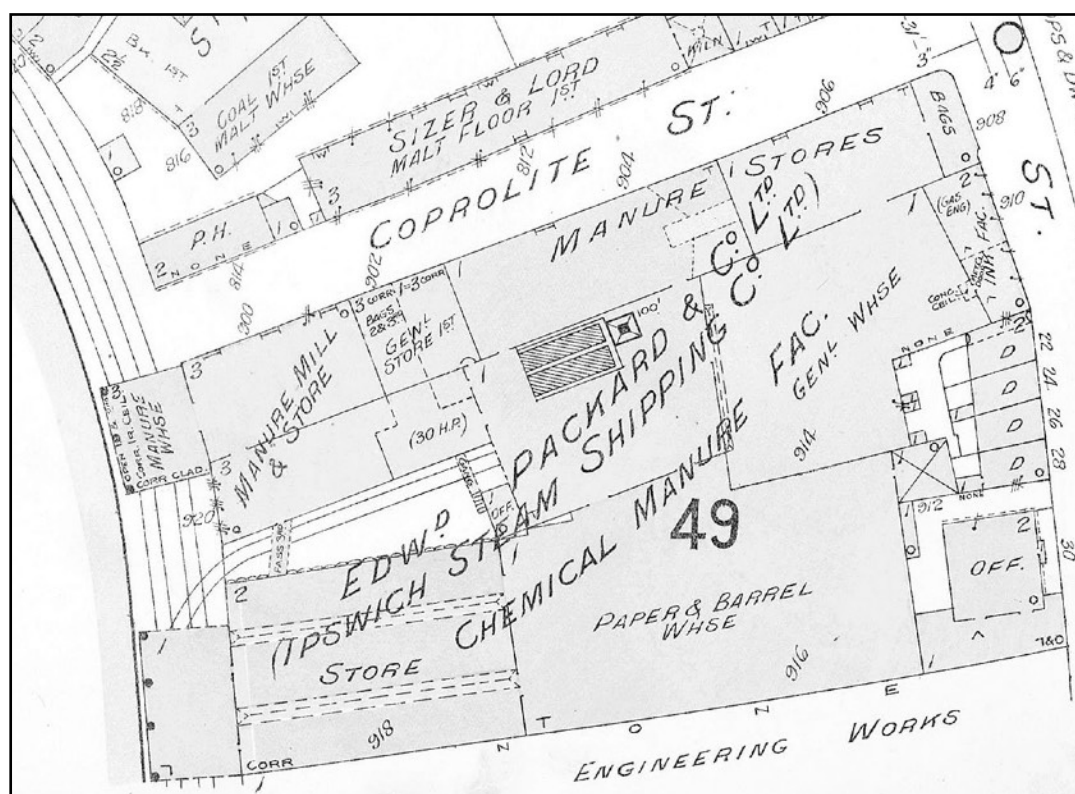
I read with interest the account of Copperas Reach and its use in the creation of printer's ink in the January *Newsletter* (Issue 232). I had recently been reading Tony Cosey's biographical directory, *Ipswich Book Trades* (2011)* as it mentions Edward Packard and Co.'s *Ipswich Series* of inks. So I decided to investigate a little bit further. Edward Packard senior (1819-1899) had

qualified as a chemist apprenticed to Francis Cupiss, who not only provided horse medicines but also established a letterpress in Diss in 1830. In fact, Cupiss was still in business until 2022 when the owner retired. The original Columbian Eagle Press dating from the 1830s was still in operation until the end.

Fast forward fifty years to September, 1889 and a notice appeared in the trade journal *The Printing Times and Lithographer (PT&L)* that Edward Packard and Co. had ‘commenced the manufacture of printing-inks and varnishes, on an extensive scale for exportation’. Whether Edward Packard Senior had a hand in this is hard to say. The day-to-day management of the firm was handed over to his sons: Edward Packard Junior and Henry Wood Packard around this time. Perhaps more pertinent to this new initiative are the reports of a fire in March 1889 in which the businesses premises on Ipswich Dock – alongside Coprolite Street – were entirely destroyed. Edward Packard and Co. had premises in Ipswich and at 155 Fenchurch Street, London. The new business was undertaken by the newly appointed Mr C.H. Midgley, who had previous experience in the print supplies trade. At a time when the fertiliser trade was facing stiff competition from abroad, particularly the USA, Midgley was a strong advocate of ‘British Ink for British Printers’ (see November 1889 issue of *PT&L*). The full page advert shown here appeared regularly in the *PT&L* in 1890.

By April 1890 they had established an office at 95 Bath Street Glasgow, where they proposed to keep stocks of their printing products under the management of William V. Graham. However by September of that year Packards had re-located their London office to 17 Lawrence Lane, conveniently near the Great Eastern Railways Parcel depot. But more revealing is that Mr Midgley announced that as of 11 September he had severed all connection with them. He stated he intended to set up in business on his own account selling of print machinery and sundries. He also offered his services as an agent for “the sale and purchase of businesses, and the negotiation of partnerships in connection with the printing trade”.

Bernard O’Connor has written about the problems of the coprolite-based fertiliser trade in Suffolk (*The Suffolk Fossil Diggings* 2009) and quotes an account of the 1889 fire. However he doesn’t mention this attempt to branch out into manufacturing printing ink – which as it lasted



barely a year is hardly surprising. Their involvement in shipping – which had started many years earlier under Edward Packard senior – is treated more fully.

Charles E. Goad Ltd make no mention of printing ink facilities in the detailed plan of Packard's dockside premises, Ipswich. This was produced for insurance purposes in 1909 and the premises are identified as belonging to Edward Packard and Co. Ltd. – and the Ipswich Steam Shipping Company Ltd. It principally refers to the processing and storing of chemical manure.

Nevertheless, I hope this brief account gives an idea of how an Ipswich business set out to explore adapting their product range when their principal trading market was no longer viable.

For *The Printing Times and Lithographer* (1875-1891)

see https://en.wikisource.org/wiki/Portal:Printing_Times_and_Lithographer;

Bernard O'Connor has the website <http://bernardoconnor.org.uk> and his book, *The Suffolk Fossil Diggings*, (2009) is available in various formats;

Maps of Ipswich by Charles E. Goad Ltd can be downloaded from Wikimedia Commons at

https://commons.wikimedia.org/wiki/Category:Goad_fire_insurance_maps_of_Ipswich;

Photographs of the Columbian Eagle Press can be seen on their facebook page:

<https://www.facebook.com/CupissLetterpress>.

Fabian Tompsett

[N.B.: Packard's London office is shown on the advertisement, but it's nice that they are also at 'Steam Works: – Ipswich, England' and now we know from the 1909 Goad map that this refers to the Ipswich Steam Shipping Co. Ltd.]

*Copsey, Tony. *The Ipswich book trades : booksellers, bookbinders, engravers, librarians, music sellers, newsagents, papermakers, printers, publishers, stationers at Ipswich until 1900 : a biographical dictionary*. 2011, Ipswich. Distributed by Claude Cox. Can be consulted at Suffolk Record Office, The Hold. -Ed.]

Members' Outing

Wednesday August 2; Guided Walk - Colourful and Creative Characters

A walk with well-known town guides Chris and Lois Terry around Ipswich town centre to discover some of the famous, fascinating folk with Ipswich connections.

Date: Wednesday, 2 August; **time:** 7pm to approximately 8.30pm.

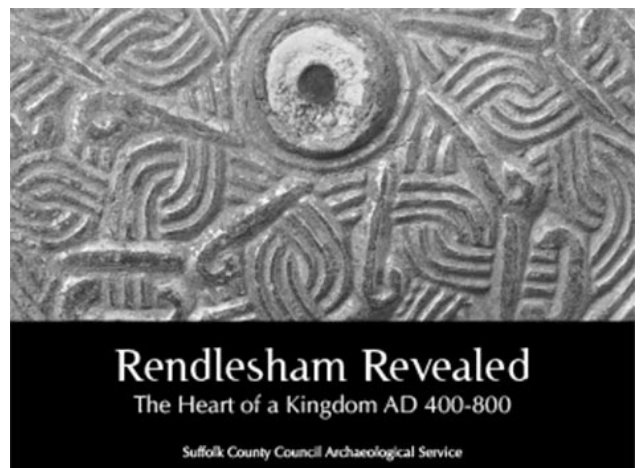
Start and Finish: St Stephen's Church (formerly Tourist Information Centre) in Arras Square.

Cost: £4 per person to be paid, in cash, on the night.

Places are limited and must be booked in advance. To reserve a place, please contact: Lois and Chris Terry on Tel. 01473 727256 or 07779 639450.

Rendlesham revealed

The remarkable archaeological project subtitled *The heart of a kingdom AD 400-800* has spawned an exhibition at the Sutton Hoo centre which runs until 29 October. This is the story of an Anglo-Saxon royal settlement in Suffolk, the largest and wealthiest of its time known in England. On display are 1,400-year-old artefacts, many never before seen by the public, which help tell the story of Rendlesham's





royal connections and its international importance. Entry is free with site admission.

An accompanying booklet has been published by Suffolk County Council. We hope to include a longer article in our October issue.

Rare Ipswich Co-op *Harvest* mural listed

There can't have been an issue of this *Newsletter* over the past couple of years that hasn't featured the controversial plan to demolish the string of Co-operative stores on Carr Street to the east of Cox Lane in order to build a school.

Apart from the range of periods reflected in the shop facades, the mural often called *Harvest* would have been threatened with destruction by the development. Created in 1963-4 by Hungarian émigré artists Gyula Bajo (1907-1984) and Endre Hevezi (1923-2017) working for Co-operative Wholesale Society Architects Department, it is one of only four such Co-op murals in the UK. This colourful mosaic is 9 by 3 metres in size and is in modernist style. Two Greek mythological figures are shown: Demeter, goddess of the harvest and agriculture holding a sheaf of corn and the messenger Hermes, who was sent to the underworld to save Demeter's daughter Persephone from Hades, so that the seasons could be restored and famine prevented on earth. Hermes floats horizontally; he has a winged helmet and white wings on his boots at the left. The wheatsheaf is a popular emblem of the Co-operative Movement, as 'a stalk of corn cannot stand alone, but many stand together'

The provision of distinctive public art was a notable initiative in the post-war period by major retailers such as the Co-operative Stores. The Co-operative movement is an important product of working-class culture during the late 19th and 20th centuries. With the movement's general decline across the United Kingdom, monuments such as these have significant social and historic interest, and every attempt should be made for them to be appropriately conserved.

On 12 April 2023 it was announced that the mural has been listed Grade II, the proposal supported by the 20th Century Society. The news represents another success for the 20th C. Society's long-running Murals Campaign, which has seen upwards of 30 murals nationally listed and others saved through relocation, since it launched in 2009. The listing designation only covers the mural, with the former department store building being deemed of insufficient architectural and historic interest.



Whether the costs of removal and conservation of the delicate mosaic will be borne by the Department of Education is yet to be seen. Perhaps it may deter the development of the school.

RG

Our back cover

A seven-panel mural depicting 130 women from British history and culture has been commissioned by the National Portrait Gallery (NPG) as part of a three-year project to enhance female representation in its collection.

Work in progress, by Jann Haworth and her daughter Liberty Blake, was

inspired by the album cover for the Beatles' *Sergeant Pepper's Lonely Hearts Club Band*, which Haworth co-created with Peter Blake in 1967. It draws together many stencilled, life-size depictions of cultural figures – some never before represented at the NPG – into a single image.

Work in progress resulted in the NPG doubling the number of women on the walls of its post-1900 galleries to 48% when it reopened in June after major refurbishment. When the doors opened, more than 200 portraits of women made after 1900 and more than 100 portraits by women made after 1900 will be displayed. The women depicted range from the 1st century onwards and encapsulate a wide spread of professions and backgrounds, from Boudicca to Dame Mary Beard.

The mural also depicts 26 important figures who, until now, have not been represented in the gallery's collection, from the nurse Dame Elizabeth Anionwu and the vaccinologist Dame Sarah Gilbert, to the comedian and disability rights activist Barbara Lisicki and the 19th-century freedom seeker and abolitionist Ellen Craft. 'For the viewer, the mural presents an opportunity to see life-sized figures from throughout history, impossibly crowded together,' said Blake. 'The idea that Elizabeth I might stand shoulder to shoulder with Lady Caroline Norton in a crowd is amusing, invokes curiosity, and helps people learn more about the contributions of some of the women who have played a part in shaping the world that we live in.' (Information based on the *Guardian* article 8.3.2023)

We at The Ipswich Society felt it was time for us to similarly celebrate the women of our town who have received Blue Plaques since the inception of the scheme in 2000. Our Vice-Chairman, Tony Marsden, was inspired to create our mini-poster (shown on the back cover) using the



photographic images from our archive, some manipulation and colourisation to produce what we hope will be a striking and imposing salute.

Incidentally, the Ipswich Women's Festival Group website and trail celebrates thirty-one Ipswich women throughout history (www.ipswichwomensfestivalgroup.co.uk). The group is always interested to hear of further candidates for inclusion.

RG

The Ipswich Society

Registered Charity no. 263322

www.ipswichsociety.org.uk | <https://www.facebook.com/ipswichsociety> | <https://www.instagram.com/theipswichsociety>
This *Newsletter* is the quarterly journal of Ipswich's civic amenity society established in 1960. Views expressed in the *Newsletter* are not necessarily those of the Society. We make every effort to comply with copyright and GDPR law in our publications; please contact the Hon. Secretary if you have concerns about any content.

President The Mayor of Ipswich
Vice-Presidents Bob Allen, Chris Wiltshire
Trustees Eric Benton, Caroline Markham, John Norman, Graham Smith, Adam Rae

Executive Committee

Chairman	John Norman, 43 Bixley Drive, Rushmere St Andrew, IP4 5TX johnwilliamnorman@gmail.com	01473-728921
Vice-Chairman	Tony Marsden, 27 Bucklesham Road, IP3 8TH antmarsden51@gmail.com	mob. 07742 385188
Hon. Secretary	Caroline Markham, 61A Fonnereau Road, IP1 3JN secretary@ipswichsociety.org.uk	01473-226878
Treasurer	Adam Rae, 19 Weymouth Road, IP4 5BB adam.rae@ipsoft.co.uk	01473-439184
Membership & Minutes Secretary	Sandra Gage, 791 Woodbridge Road, IP4 4NN membership@ipswichsociety.org.uk	mob. 07932 422611
Planning	Mike Cook, 9 Constitution Hill, IP1 3RG mikeck9@gmail.com	01473-251498 mob. 07889 050607
Public Relations	Tim Leggett, 51 Cullingham Road, IP1 2EG timleggett@virginmedia.com	01473-232349
Newsletter	Robin Gaylard, 117 Belle Vue Road, IP4 2RD newsletter@ipswichsociety.org.uk	01473-421529
Blue plaques	Tony Robson, 25 Dunwich Close, IP3 9WF ipsocblueplaques@hotmail.com	01473-721224
Heritage Open Days	Neil Thompson, 62 Furness Close, IP2 9YA hodipswich@gmail.com	mob. 07773 586321
	Neil Salmon	
	Celia Waters, 32 Cowper Street, IP4 5JB celia.waters@btinternet.com	01473-721618
	Richard MacRae, 24 Ashmere Grove, IP4 2RE richard@edrm.co.uk	mob. 07976 354591
Co-opted member	Samantha Sherman	

Diary dates

Thursday July 13: Cruise down the River Orwell to Harwich on the barge Victor – tickets at <https://victor-barge.eventbrite.co.uk>

Thursday 27 to Sunday 30 July: 33rd Ipswich Beer and Cider Festival, St Clements Church.

Wednesday August 2, 7pm: 'Colourful and Creative Characters' an Ipswich walk led by Chris &

Lois Terry (details on page 24)
Newsletter deadlines & publication dates (the latter may vary by a few days)
Deadline for material: 1 December; Publication date: 22 January;
<i>Wednesday October 18, 7.30pm:</i> Winter lecture – Mike Scarlett talks on the Buildings of the East of England Co-operative Society
1 March; 2 April;
1 June; 17 July;
1 September; 9 October.

The National Portrait Gallery might be interested in the eight Ipswich women from *our* history



Constance Andrews
Nina Layard
Edith Maud Cook
Mary Whitmore MBE
Margaret Catchpole
Sophie Youngman
Margaret Tempest
Jean Ingelow

Inspiration for this poster is from a Guardian article (March 8th)
and the cover of the Beatles' Sgt Pepper's Album.

Note: September's Heritage Open Days 'Walks & Talks' are listed in full on page 21.