

Fore Street in early 1961, paired with 2014/15 views



1. The Spread Eagle public house, numbers 1-3 Fore Street; dates from 16th or 17th century.



2. Spread Eagle, 5-7 to 9 Fore Street with the wall of Co-operative Education Centre to the right.



3. Numbers 2 to 6 Fore Street (eventually to link up into a large Martin & Newby store) with junction of Lower Orwell Street in background with 14-20 Fore Street, formerly Sneezums corner.



4. The entrance to the Co-operative Education Centre, number 11 Fore Street; 13-15 at the right.



5. The Rapid Radio Service shop at number 13, a hairdresser's in 2014, and beyond; the former Wheatsheaf public house in the background.

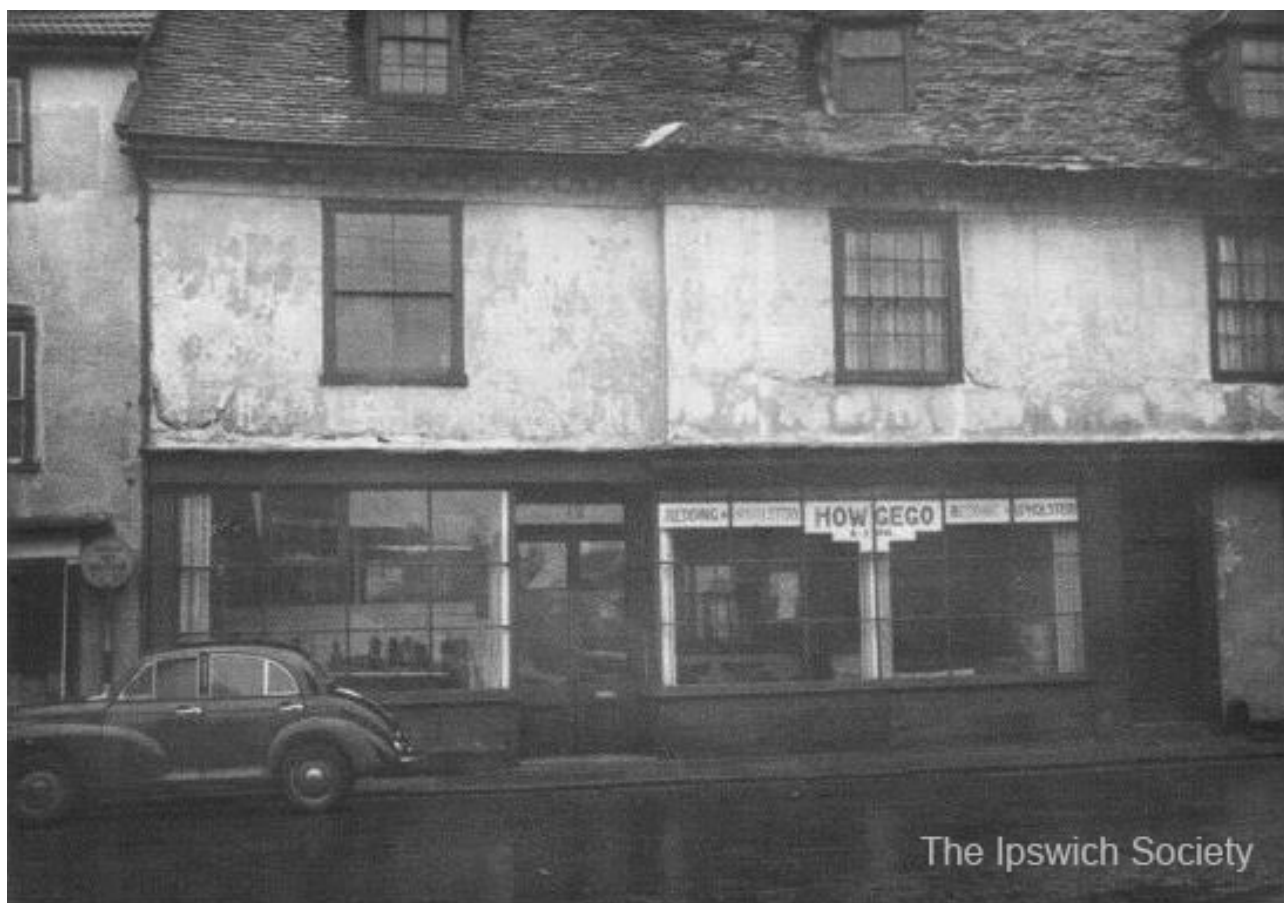


6. Number 17 Fore Street ('The Meremayd').

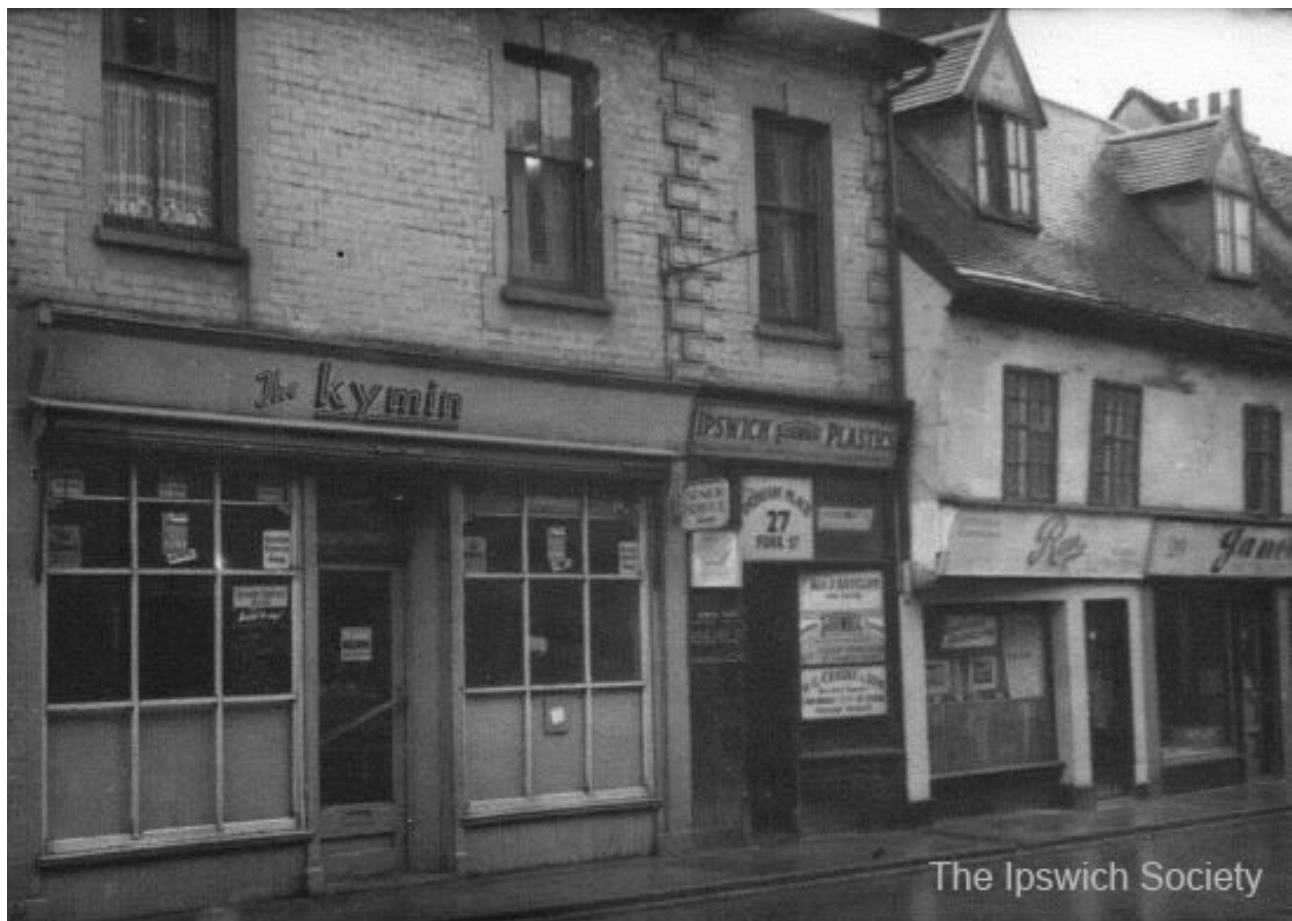




7. 19-23 Fore Street southwards, seen from the junction with Lower Orwell Street. Note the tiny extra window at upper right of M.A. Bone's number 23 in 1961.



8. 19-23 Fore Street, three small shops now one larger building, seen from the junction with Lower Orwell Street.



9. 25 Fore Street, East Ocean Restaurant, with the narrow entrance to Dedham Place, then number 29 at the right.



10. Number 27 – still the entrance to Dedham Place (“Growlers Walk” in 2014) which you cannot walk down because of the locked gate.



11. Number 29 Fore Street, once Janella Pets Parlour: all three shops, now one restaurant – interesting numbering here. In 1961, is Ron the Gentlemen's Hairdresser (at the left) number 27, part of Dedham Place?



12. From number 55 southwards, on the east side of Fore Street, with Angel Lane and the public baths in the background. All these shops south of Smyth Bros shop (currently Fore St Post Office, still using the same hanging sign bracket) have been replaced by 57-67 Fore Street.



13. The entry to Angel Lane between Weston's shop (probably number 65 – the modern building extends further, the lane is narrower) and Fore Street Baths.



14. Number 52 Fore Street, on the west side, from Angel Lane. Number 50 has a street door and a vehicle entry.



15. 56-58 Fore Street was Smyth Bros Ironmongers's shop and Builders Merchants. The southernmost shop at 58 is a tattooist in 2014.



16. 56-58 Fore Street from a different angle; number 60 to the left bears some pargeting. This was Herbert Wells, pork butcher, famous for his sausages: housewives queued when a new batch went on sale.



17. On the inner curve of Fore Street stands the angled frontage of number 73; 71 is to the left, with the Lord Nelson (listed as number 81) to the right.



18. The fourth Smyth Bros. set of premises encountered on Fore Street, currently an empty plot with some guerilla gardening taking place within (following archaeological explorations).

19. Formerly T.E. & J. Conder, Leather Merchants, Boot Factors & Curriers at number 95. This building remains largely unchanged.





The Ipswich Society



The Ipswich Society

20. Conder's at 95 and Jackson Dispensing Chemist (later E.J. Owles Chemist) at number 97, built on the site of Thomas Eldred's house.



The Ipswich Society



The Ipswich Society

21. The Esso petrol station occupied a demolition plot until the building of Minerva Court at number 101; built in 2004, it “manages quite well to look like three separate town houses of different periods” (Pevsner). A lane to the left (where the van stands) now leads to 12-26 St Clements Church Lane.



22. The former 'Tudorbethan'-style Salvation Army Hostel for Men at the west corner of the Grimwade Street junction was at number 107 Fore Street and was replaced by the current hostel, Lyndon House, in 1987-89.



23. Opposite the Salvation Army Hostel, things have changed dramatically. In the 1961 view, the gates to the left are probably lettered: Meux's Brewery Co. Ltd., the large maltings (centre – part of the wall was retained until the 1980s) adjoins the Meux offices with decorative window surrounds.



24. Three properties to the east of the former Sorrell Horse entry. Considerable changes to the frontages of the centre shop (Richards & Death) and C.H. Fisk, Tobacconist's at number 127, to the right, can be noted. The demolition of buildings beyond has given way to a car park for University Campus Suffolk in 2014.



25. C.H. Fisk, Tobacconist & Confectioner, at number 127 Fore Street. The building survives, almost unrecognisable, as a Georgian town house (see the modern view here). The slight double exposure of this photograph highlights the plethora of trade signs which businesses like this used to attract customers. The emphasis on tobacco products is very 1961, not to mention the chewing gum machines.



26. 1961: the Social Settlement with the Long Street junction and Back Hamlet in the background. Now a car park, the UCS Waterfront building stands opposite this site.



27. Grimwade Memorial Hall between Back Hamlet and Fore Hamlet; in 1961 seen from the Duke Street roundabout and in 2014 from a laned (very busy) junction. An unprepossessing frontage has been sensitively refurbished and the building converted into flats.



28. In 1961 the photographer stood on the grassy Duke Street roundabout to take this view looking down Fore Street. At the right beyond the advertising hoarding is the Social Settlement. On the left, beyond the timbered cottages (today including Offord's Newsagents) and projecting forward is the 'T.M. Ltd' / Meaux maltings building shown in the architect drawings. "A glass-and-a-half of full cream dairy milk in each half-pound bar..." a Cadbury's chocolate advertising slogan used since 1905.