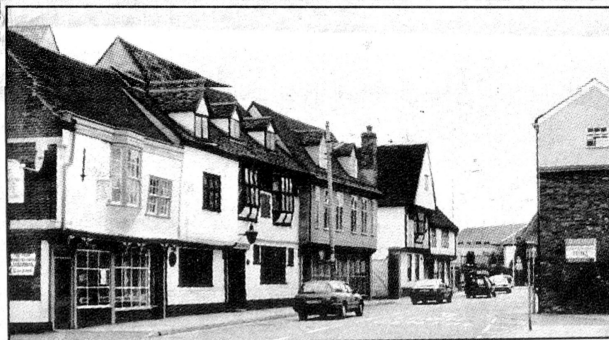


Then & Now



Be-For Street and after

FORE Street in Ipswich is pictured (above) in around 1910. The street was busy then with a mixture of shops and traders. Many of the buildings on the right of this view have now been demolished, although many of those on the left-hand side remain. These include the old Nuptune Inn, now Nuptune Antiques.

The street (today pictured left) is now part of the town's busy one-way system.

It certainly has a much faster pace of life than when horse power dominated the scene at the turn of the century.

■ Main picture courtesy of Dave Kindred.

town
-ever
ing to

pro-
of a
hich
d up
rists.
s to
to
e the
ve.
Sam
e had
ener-
ing to
ppier
le in

strict
urist
in
help
n the

facht
about
Last
at the
n but
nber
0 by

boats
h on
board
ights.
have
nd, if
ve lo
said

four
erall
erau
and

who
table
in
ears,
n for

with
n last
it we
re is
actor
d we
ental
ice.

es Today

News flash